

MITZI ASSEMBLY

SECTIONS

HEAD ASSEMBLY

CHEST ASSEMBLY

RIGHT ARM ASSEMBLY

LEFT ARM ASSEMBLY

LEG ASSEMBLY

AIR SUPPLY SYSTEM

COSTUMES & FIBERGLASS

MITZI HEAD ASSEMBLY

HEAD FRAME

10. Head frame w/bearings	M11440
11. Needle bearing only	B56
12. Bushing only (old style)	FB56-3
13. Bushing only (eye pivot)	B56-4

EAR ASSEMBLY

14. Ear lever w/bushing	M11381
15. Bushing only (ear lever)	B46-2
16. FAS-PIN (ear lever to ear body)	28-055-172
17. Set screw 8-32 x 1/4"	28-090-302
18. Ear cyl. rear mount	M07010
19. Hardware (ear cylinder rear mount to body)	28-090-341
8-32x1" cap screw	
8-32 nut	
#8 flatwasher	
#8 lockwasher	

EAR CYLINDER ASSEMBLY

20. Cylinder only	28-005-010
21. Barb with O-ring	1000
22. Clevis (front)	28-040-005
23. Clevis (rear)	28-040-010
24. Gasket (fiber style)	2400

ASSEMBLY HARDWARE

HARDWARE (attach ear cylinder to ear lever & rear mount)	
25. Cotter pin	28-045-957

EYE ASSEMBLY

26. Eyeball	M11250
27. Bronze washer	28-085-025
28. Shaft collar	28-070-025

EYE LINKAGE ASSEMBLY

29. Right eye act. lever	M07100
30. Left eye act. lever	M11270
31. Mule bar (eye link. bar)	M07180
32. Shaft collar	28-070-010
33. Dowel pin	28-055-025
34. Eye cyl. rear mount	M07150
35. Hardware (eye cyl. rear mount to head frame)	28-090-342
10-32x3/4" cap screw	
10-32 nut	
#10 lockwasher	
#10 flatwasher	

EYES LEFT/RIGHT CYLINDER ASSEMBLY

36. Cylinder only	28-005-010
37. Barb with O-ring	1000
38. Clevis (front)	28-040-005
39. Clevis (rear)	28-040-010
40. Gasket (fiber style)	2400

ASSEMBLY HARDWARE

HARDWARE (attach cylinder to eye linkage & rear mount)	
41. Cotter pin	28-045-957

EYELID ASSEMBLY

42. Eyelid	M13555
43. FAS-PIN (eyelid cyl. front mount)	28-055-170
44. Shaft collar (rear mount)	28-070-015
45. Cyl. rear mount pin (7 1/2" dowel pin)	28-055-081

EYELID CYLINDER ASSEMBLY

46. Cylinder only	D31801-A
47. Rebuild kit (Chicago cylinder)	28-012-035
48. Fitting	85-030-110
49. Barb with O-ring	1000
50. Gasket (fiber style)	2400
51. Jam nut	28-040-215
52. Clevis	28-040-015
53. Bushing (cyl. rear)	B46-2

MOUTH ASSEMBLY

54. Mouth lever w/bushing	M11210
55. Bushing only (mouth pivot)	FB56-3
56. Bushing only (mouth lever)	B46-2
57. Bronze washer	28-085-025
58. Dowel pin (mouth pivot)	28-055-100
59. Set screw 8-32 x 1/4"	28-090-302
60. FAS-PIN (cyl. front and rear mount)	28-055-170
61. Mouth cyl. rear mount	M07230
62. Hardware (cyl. rear mount to head frame)	28-090-304
1/4-20x3/4" bolt	
1/4-20 nut	
1/4 flatwasher	
1/4 lockwasher	

MOUTH CYLINDER ASSEMBLY

63. Cylinder only	D31801-A
64. Rebuild kit (Chicago cylinder)	28-012-035
65. Fitting	85-030-110
66. Barb with O-ring	1503
67. Gasket (fiber style)	2400
68. Jam nut	28-040-215
69. Clevis	28-040-015
70. Bushing (cylinder rear)	B46-2

E-HINGE ASSEMBLY

71. E-hinge with bearings	M09442
72. Needle bearing only	B56
73. Dowel pin (E-hinge)	28-055-130
74. Retaining clip	28-055-205
75. Load washer	28-085-125

ASSEMBLY HARDWARE

76. Hardware (attach head to chest)	28-090-305
5/16-18 x 1" bolt	
5/16 lockwasher	

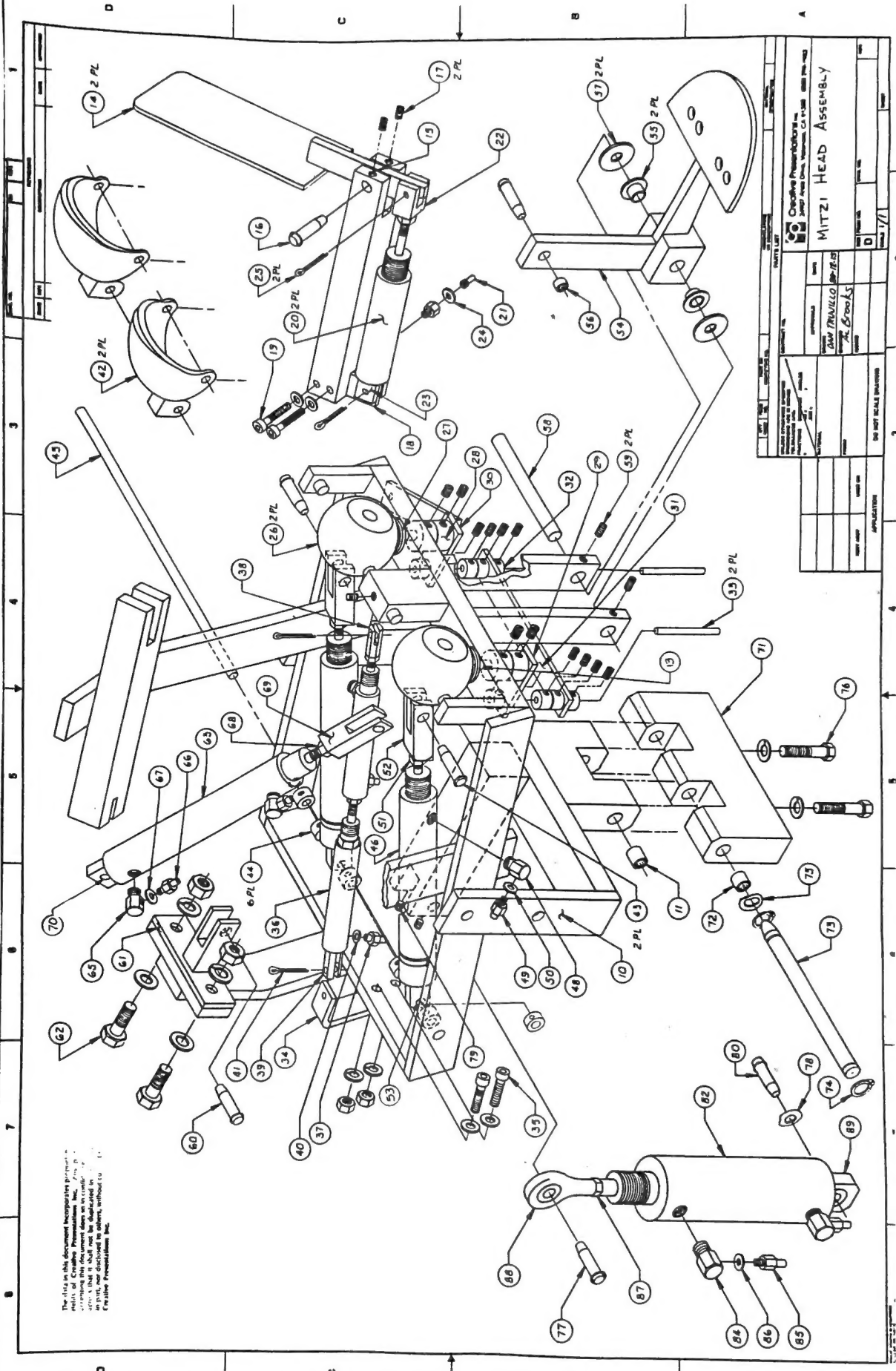
HEAD UP/DOWN MOUNT ASSEMBLY

77. FAS-PIN (front cylinder mount)	28-055-178
78. Load washer	28-085-125
79. Set screw 8-32 x 1/4"	28-090-302
80. FAS-PIN (rear cylinder mount)	28-055-178

HEAD UP/DOWN CYLINDER ASSEMBLY

81. Rebuild kit (brass cylinder)	28-010-210
82. Cylinder only	D31796-A
83. Rebuild kit (Chicago cylinder)	28-012-040
84. Fitting	85-030-110
85. Barb with O-ring	1000
86. Gasket (fiber style)	2400
87. Jam nut	28-040-225
88. Rod end	M19800
89. Bushing (cylinder only)	B58-3

This is an exploded view diagram of the MITZI HEAD ASSEMBLY. It shows the various components and their relative positions. The drawing is a technical illustration of a mechanical assembly, showing various parts and their assembly sequence. The parts are numbered from 1 to 89, and some are labeled with quantities such as "2 PL", "6 PL", and "2 PL". The drawing is oriented vertically on the page, with the top of the assembly at the top of the page. The drawing is a technical illustration of a mechanical assembly, showing various parts and their assembly sequence. The parts are numbered from 1 to 89, and some are labeled with quantities such as "2 PL", "6 PL", and "2 PL".



		MITZI HEAD ASSEMBLY	
APPROVED BY DAN TRAVILLO J. C. Cross	DATE 1/11/71	DRAWN BY J. C. Cross	CHECKED BY J. C. Cross
PART NO. 171		QTY. 1	
MATERIALS		DIMENSIONS	
FINISHES		WEIGHTS	
TOLERANCES		ASSEMBLY	

MITZI CHEST ASSEMBLY

CHEST ASSEMBLY

10. Chest with bearings	M17985
11. Needle bearing only	B56
12. Bushing only (old chest pivot)	FB56-3
13. Bushing only (upper neck)	B56-8
14. Bushing only (lower neck)	B56-7
 <u>UPPER NECK SHAFT ASSEMBLY</u>	
15. Shaft with bearing (upper neck)	M11490
16. Bearing only	B45
17. Bushing only (old style)	B56-8
18. Shaft collar (upper neck)	28-070-045
19. Delrin neck spacer	M06743
20. Rear mount block (head up/down cylinder)	M10020
21. Cap screws	28-045-970
22. Set screw 8-32 x 1/4"	28-090-302
23. Actuation lever (head left/right)	M07420
24. Set screw	28-090-306
25. Roll pin (old style)	28-060-045
26. FAS-PIN (act. lever)	28-055-186
27. Bronze washer	28-085-025
28. Split shaft pin (with bushing)	28-055-125
29. Split shaft pin (with bearings)	28-055-200
29.5. Dowel pin	28-055-100

COLLAR PINS

30. Collar pin (left/right arm raise rear mount)	28-050-060
31. Collar pin (head left/right cyl. rear mount)	28-050-013
32. Shaft collar (head left/right cyl. rear mount)	28-070-029
33. Hardware (collar pin)	28-090-308
3/8-24 nut	
3/8 lockwasher	

HEAD LEFT/RIGHT CYLINDER ASSEMBLY

34. Cylinder only	28-015-037
35. Cylinder rebuild kit	28-015-214
36. Fitting	85-030-110
37. Barb with O-ring	1000
38. Gasket (fiber style)	2400
39. Bushing only (rear mt. block old style)*	B68-6
40. Spherical bearing rear mount	28-015-280
41. Jam nut	28-040-227
42. Rod end	TRE-5

LOWER NECK SHAFT ASSEMBLY

43. Shaft with bearing (lower neck)	M11530
44. Bushing only (old style)	B56-8
45. Bearing only (new style)	B45

BODY LEAN ASSEMBLY

46. Body lean lever with bushing	M08680
47. Bushing only (body lean actuation lever)	B68-4
48. Hardware (body lean act. lever to chest frame)	28-090-307
5/16-18x2" bolt	
5/16-18 nut	
5/16 flatwasher	
5/16 lockwasher	

* Replaces old-style block.

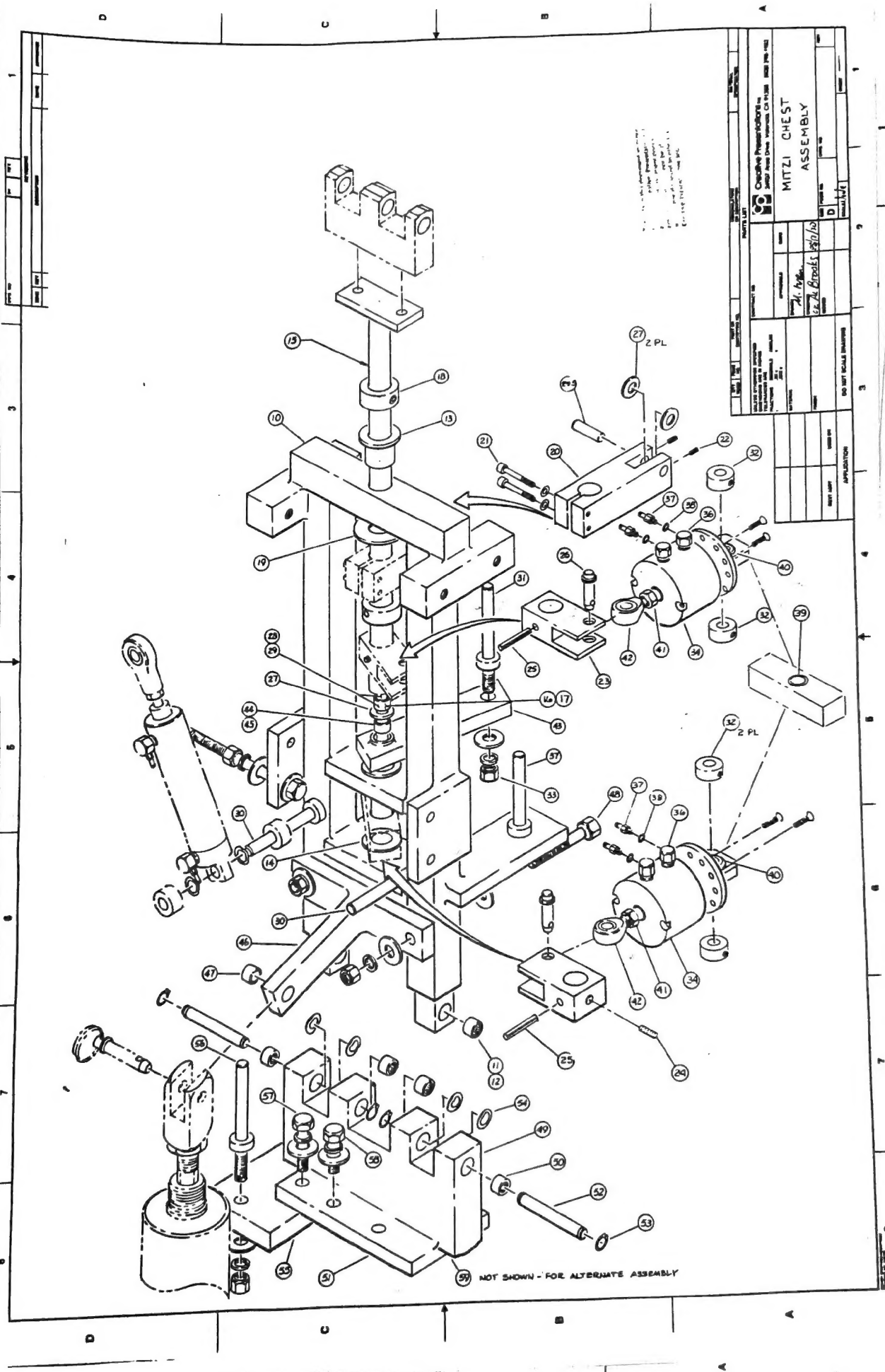
PELVIS PLATE ASSEMBLY

49. Double C-hinge with bearing *	M09605
50. Needle bearing only	B56
51. Pelvis plate base *	M08350
52. Dowel pin (C-hinge pin)	28-055-120
53. Retaining clip	28-055-205
54. Load washer	28-085-125
55. Body turn front mount plate only	M10990
56. Collar pin only (body turn front mount)	28-050-075
57. Hardware (body turn to pelvis plate)	28-090-343
5/16-24x1 1/2" bolt	
5/16-24 nut	
5/16 flatwasher	
5/16 lockwasher	
58. Hardware (attach pelvis plate to leg assembly)	28-090-344
5/16-18x1" bolt	
5/16 lockwasher	
5/16 flatwasher	
59. Hardware (attach double C-hinge to pelvis plate base)	28-045-969
Tapered flat head cap screw *	

* If you have a welded pelvis plate then you must order the following parts to get an entire pelvis plate assembly:

1 - M09605
1 - M08350
4 - 28-045-969

Individual parts may be ordered if you have an assembled plate.



Creative Products Inc. 3000 West 10th Street, Minneapolis, MN 55410		PART NO. 100-1000	
MITZLI CHEST		REV. 10/78	
ASSEMBLY		DATE 10/78	
DRAWN BY: G. L. Brooks 10/78		CHECKED BY: []	
MATERIALS		APPLICATION	
PART NAME		QUANTITY	
PART NO.		REVISION	

1. This assembly is for use with the Mitzli Chest.
 2. The Mitzli Chest is a heavy duty chest.
 3. The Mitzli Chest is made of heavy duty steel.
 4. The Mitzli Chest is available in two sizes.
 5. The Mitzli Chest is available in two colors.

59 NOT SHOWN - FOR ALTERNATE ASSEMBLY

MITZI RIGHT ARM ASSEMBLY

RIGHT SHOULDER ASSEMBLY

- | | | |
|--|------------------------|------------|
| 10. Small K-hinge | with bearings | M18060 |
| 11. Bushing only | (old style) | FB56-3 |
| 12. Needle bearing only | | B56 |
| 13. Collar pin (cylinder rear mount pin) | | 28-050-025 |
| 14. Collar pin | (arm raise pin) | 28-050-015 |
| 15. Hardware (collar pin) | 3/8-24 nut | 28-090-308 |
| | 3/8 lockwasher | |
| 16. Shaft collar (cylinder rear mount pin) | | 28-070-029 |
| 17. Shoulder shaft block | with bushing | M09870 |
| 18. Bushing only | (shoulder shaft block) | FB810-4 |
| 19. Hardware (shoulder shaft block to K-hinge) | 1/4-20x2 1/2" bolt | 28-090-310 |
| | 1/4-20 nut | |
| | 1/4 flatwasher | |
| | 1/4 lockwasher | |
| 20. Shoulder shaft | (small shoulder) | M11800 |
| 21. Actuation lever | (small shoulder) | M07380 |
| 22. Set screw 8-32 x 1/4" | | 28-090-302 |
| 23. Hardware | (small shoulder) | 28-045-972 |
| | Cap screw | |
| | #10 lockwasher | |
| 24. Dowel pin | (cyl. front mount) | 28-055-087 |
| 25. Roll pin | (to pin act. lever) | 28-060-045 |

ASSEMBLY HARDWARE

- | | | |
|--|---------------------|------------|
| 26. Hardware (attach right arm to chest) | 5/16-18x1 1/2" bolt | 28-090-309 |
| | 5/16 lockwasher | |

MITZI UPPER RIGHT ARM ASSEMBLY

- | | | |
|---|--------------------|------------|
| 27. Upper right arm | with bearings | M12035 |
| 28. Needle bearing only | | B56 |
| 29. Hardware (attach upper arm to shoulder) | 1/4-20x1 1/4" bolt | 28-090-345 |
| | 1/4-20 nut | |
| | 1/4 flatwasher | |
| | 1/4 lockwasher | |

MITZI LOWER RIGHT ARM ASSEMBLY

- | | | |
|-------------------------|---------------|------------|
| 30. Lower right arm | with bearings | M12050 |
| 31. Lower arm pivot | bushing (old) | FB56-3 |
| 32. Lower arm lever | bushing | 28-032-035 |
| 33. Needle bearing only | (arm pivot) | B56 |

E-HINGE ASSEMBLY

- | | | |
|-------------------------|-------------|------------|
| 34. E-hinge w/bearings | | M09442 |
| 35. Needle bearing only | | B56 |
| 36. E-hinge pin | (dowel pin) | 28-055-130 |
| 37. Load washer | | 28-085-125 |
| 38. Retaining clip | | 28-055-205 |

SHOULDER CYLINDER ASSEMBLY

- | | | |
|--------------------------|------------------|------------|
| 39. Cylinder only | | 28-015-040 |
| 40. Rebuild kit | | 28-015-214 |
| 41. Fitting | | 85-030-110 |
| 42. Barb with O-ring | | 1000 |
| 43. Gasket (fiber style) | | 2400 |
| 44. Jam nut | | 28-040-227 |
| 45. Rod end | | TRE-5 |
| 46. Bushing for | rear mount block | B68-4 |
| 47. Spherical bearing | for rear mount | 28-015-280 |

ASSEMBLY HARDWARE

- | | | |
|--|--|------------|
| HARDWARE (attach upper arm to lower arm) | | |
| 48. Dowel pin | | 28-055-180 |
| 49. Retaining clip | | 28-055-205 |
| 50. Load washer | | 28-085-125 |

RIGHT ELBOW CYLINDER ASSEMBLY

51.Rebuild kit (brass
cylinder) 28-010-210
52.Cylinder only D31796-A
53.Rebuild kit (Chicago
cylinder) 28-012-040
54.Fitting 85-030-110
55.Barb with O-ring 1001
56.Gasket (fiber style) 2400
57.Jam nut 28-040-225
58.Clevis 28-040-025
59.Bushing (cyl. rear) B58-3

ASSEMBLY HARDWARE

HARDWARE (attach cylinder to
upper and lower arm)

60.FAS-PIN (upper arm) 28-055-176
61.Set screw
8-32 x 1/4" long 28-090-302
62.FAS-PIN (lower arm) 28-055-178

RIGHT ARM RAISE CYLINDER ASSEMBLY

D31794-A
63.Cylinder only
64.Rebuild kit (Chicago
cylinder) 28-012-040
85-030-110
65.Fitting 1001
66.Barb with O-ring 2400
67.Gasket (fiber style) 28-040-225
68.Jam nut M19810
69.Rod end B68-3
70.Bushing (cyl. rear)

ASSEMBLY HARDWARE

HARDWARE (attach cylinder
to arm and chest)
71.Shaft collar 28-070-029

DUCT HOSE ASSEMBLY

72.Duct hose (arm cover) ADH 1502
73.Hardware (attach duct
hose to arm) 28-057-044
Threaded rod
1/4-20 x 3 1/2"
74.Hardware (attach duct
hose to arm) 28-090-329
1/4-20 nut
1/4 flatwasher
1/4 lockwasher

MITZI LEFT ARM ASSEMBLY

LEFT SHOULDER ASSEMBLY

10. Small K-hinge with bearings M12000
11. Bushing only (old K-hinge) FB56-3
12. Needle bearing only (new K-hinge) B56
13. Collar pin (cylinder rear mount pin) 28-050-025
14. Collar pin (Arm raise front mount) 28-050-015
15. Hardware (collar pin) 28-090-308
 - 3/8-24 nut
 - 3/8 lockwasher
16. Shaft collar (cylinder rear mount pin) 28-070-029
17. Shoulder shaft block with bushing M09870
18. Bushing only (shoulder shaft block) FB810-4
19. Hardware (shoulder shaft block to K-hinges) 28-090-365
 - 1/4-20x2" bolt
 - 1/4-20 nut
 - 1/4 flatwasher
 - 1/4 lockwasher
20. Shoulder shaft (small shoulder) M11800
21. Actuation lever (small shoulder) M07380
22. Set screw 8-32 x 1/4" 28-090-302
23. Hardware (small shoulder) 28-045-972
 - Cap screw
 - #10 lockwasher
24. Dowel pin (cylinder front mount) 28-055-087
25. Roll pin (to pin act. lever) 28-060-045

ASSEMBLY HARDWARE

26. Hardware (attach left arm to chest) 28-090-309
 - 5/16-18x1 1/2" bolt
 - 5/16 lockwasher

UPPER LEFT ARM ASSEMBLY

27. Upper left arm with bearings M12035
28. Needle bearing only B56
29. Hardware (attach upper arm to shoulder) 28-090-311
 - 1/4-20x1 1/2" bolt
 - 1/4-20 nut
 - 1/4 flatwasher
 - 1/4 lockwasher

LOWER LEFT ARM ASSEMBLY

30. Lower left arm with bearings M12050
31. Lower arm pivot bushing (old) FB56-3
32. Lower arm lever bushing 28-032-035
33. Needle bearing only B56

E-HINGE ASSEMBLY

34. E-hinge with bearings M09442
35. Needle bearing only B56
36. E-hinge pin (dowel pin) 28-055-130
37. Load washer 28-085-125
38. Retaining clip 28-055-205

SHOULDER CYLINDER ASSEMBLY

39. Cylinder only 28-015-040
40. Rebuild kit 28-015-214
41. Fitting 85-030-110
42. Barb with O-ring 1000
43. Gasket (fiber style) 2400
44. Jam nut 28-040-227
45. Rod end TRE-5
46. Bushing for rear mount B68-4
47. Spherical bearing for rear mount 28-015-280

ASSEMBLY HARDWARE

48. Dowel pin 28-055-180
49. Retaining clip 28-055-205
50. Load washer 28-085-125

LEFT ELBOW CYLINDER ASSEMBLY

51.Rebuild kit (brass
cylinder) 28-010-210
52.Cylinder only D31796-A
53.Rebuild kit (Chicago
cylinder) 28-012-040
54.Fitting 85-030-110
55.Barb with O-ring 1001
56.Gasket (fiber style) 2400
57.Jam nut 28-040-225
58.Clevis 28-040-025
59.Bushing (cyl. rear) B58-3

ASSEMBLY HARDWARE

HARDWARE (attach cylinder
to upper and lower arm)
60.FAS-PIN (upper
arm mount) 28-055-176
61.Set screw 8-32 x 1/4" 28-090-302
62.FAS-PIN (lower
arm mount) 28-055-178

LEFT ARM RAISE CYLINDER ASSEMBLY

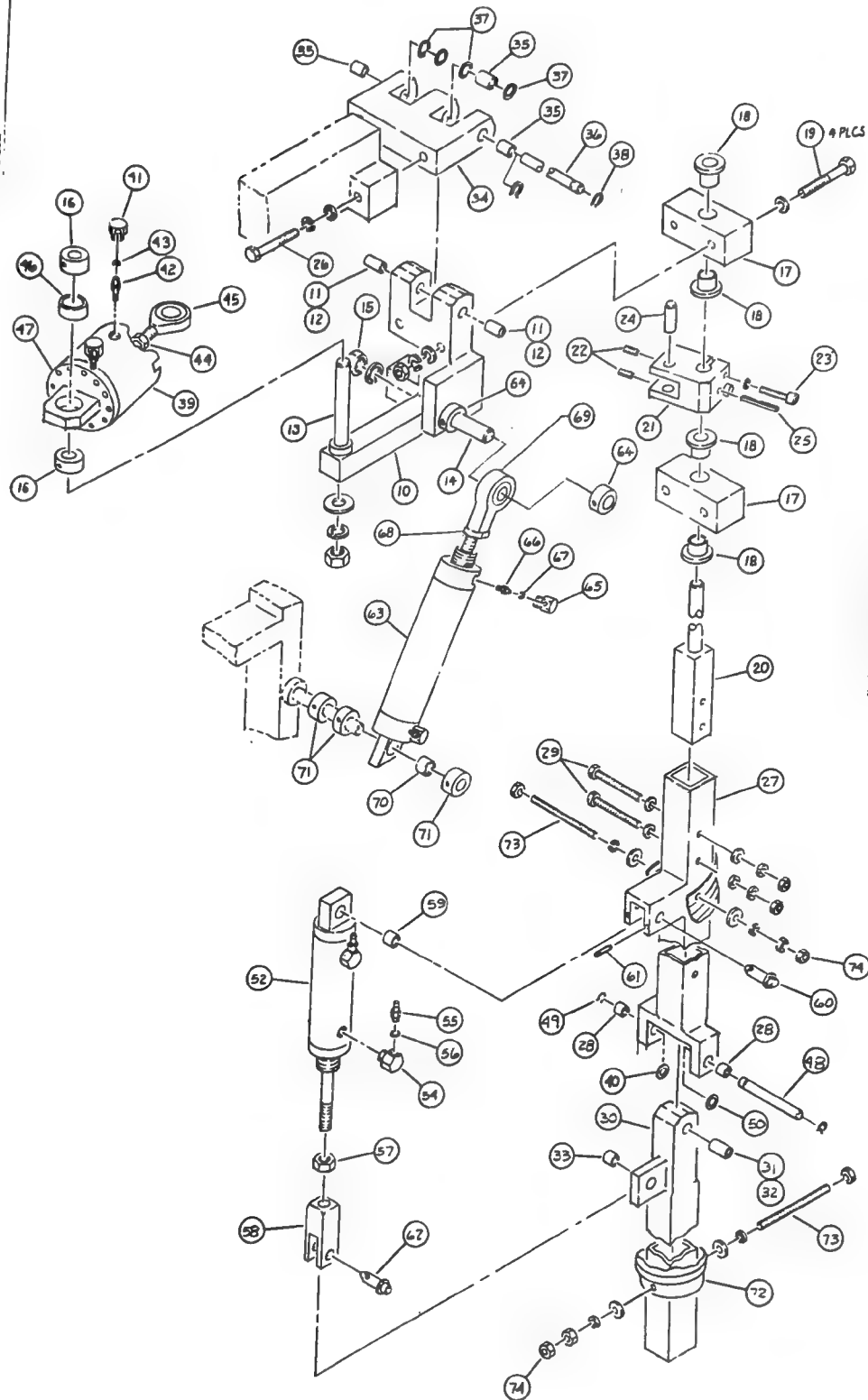
63.Cylinder only D31794-A
64.Rebuild kit (Chicago
cylinder) 28-012-040
85-030-110
65.Fitting 1001
66.Barb with O-ring 2400
67.Gasket (fiber style) 28-040-225
68.Jam nut M19810
69.Rod end B68-3
70.Bushing (cyl. rear)

ASSEMBLY HARDWARE

HARDWARE (attach arm raise cylinder
to arm and chest)
71.Shaft collar 28-070-030

DUCT HOSE ASSEMBLY

72.Duct hose (arm cover) ADH 1502
73.Hardware (attach duct
hose to arm) 28-057-044
Threaded rod
1/4-20 x 3 1/2"
74.Hardware (attach duct
hose to arm) 28-090-329
1/4-20 nut
1/4 flatwasher
1/4 lockwasher



This data is the property of the organization and is not to be distributed outside the organization. It is to be used only for the purpose of the organization and is not to be used for any other purpose. It is to be used only for the purpose of the organization and is not to be used for any other purpose.

		Creative Proprietors Inc. 10000 Wilshire Blvd., Suite 1000 Beverly Hills, CA 90210 Tel: (310) 276-1000	
Part Name: MITZI LEFT AND RIGHT ARM ASSEMBLY		Part No: 10000	
Drawing No: 10000		Date: 10/10/00	
Author:		Check:	
Designer:		Engineer:	
Draftsman:		Operator:	
Date:		Scale:	
Material:		Quantity:	
Finish:		Weight:	
Notes:		Remarks:	

MITZI LEG ASSEMBLY

LEG ASSEMBLY

- 10. Mitzi legs M18020
- 11. Spindle (body turn shaft) M11620
- 12. Clamping collar 28-070-074
- 13. Pillow block bearing 28-025-410
- 14. Hardware (pillow block to leg) 28-090-308
 - 3/8-24x1 1/2" bolt
 - 3/8-24 nut
 - 3/8 lockwasher
- 15. Body lean rear mount M19827
- 16. Set screw 1/4-20 x 1/4" 28-090-302
- 17. Body turn mount steel plate M07740
- 18. Collar pin only 28-050-070
- 19. Hardware (attach collar pin to mount) 28-090-308
 - 3/8-24 nut
 - 3/8 lockwasher

ASSEMBLY HARDWARE

- 20. Hardware (attach body turn mount to legs) 28-090-349
 - 5/16-18x1 1/2" bolt
 - 5/16-18 nut
 - 5/16 lockwasher

BODY TWIST CYLINDER ASSEMBLY

- 21. Cylinder only 28-015-070
- 22. Rebuild kit 28-015-210
- 23. Fitting 85-030-110
- 24. Barb with O-ring 1000
- 25. Gasket (fiber style) 2400
- 26. Jam nut 28-040-220
- 27. Rod end TRE-5
- 28. Alignment bar (between cyl.) M07270
- 29. Hardware (body twist cylinder) 28-090-317
 - 10-24x5" screw
 - 10-24 nut
 - #10 flatwasher
 - #10 lockwasher

ASSEMBLY HARDWARE

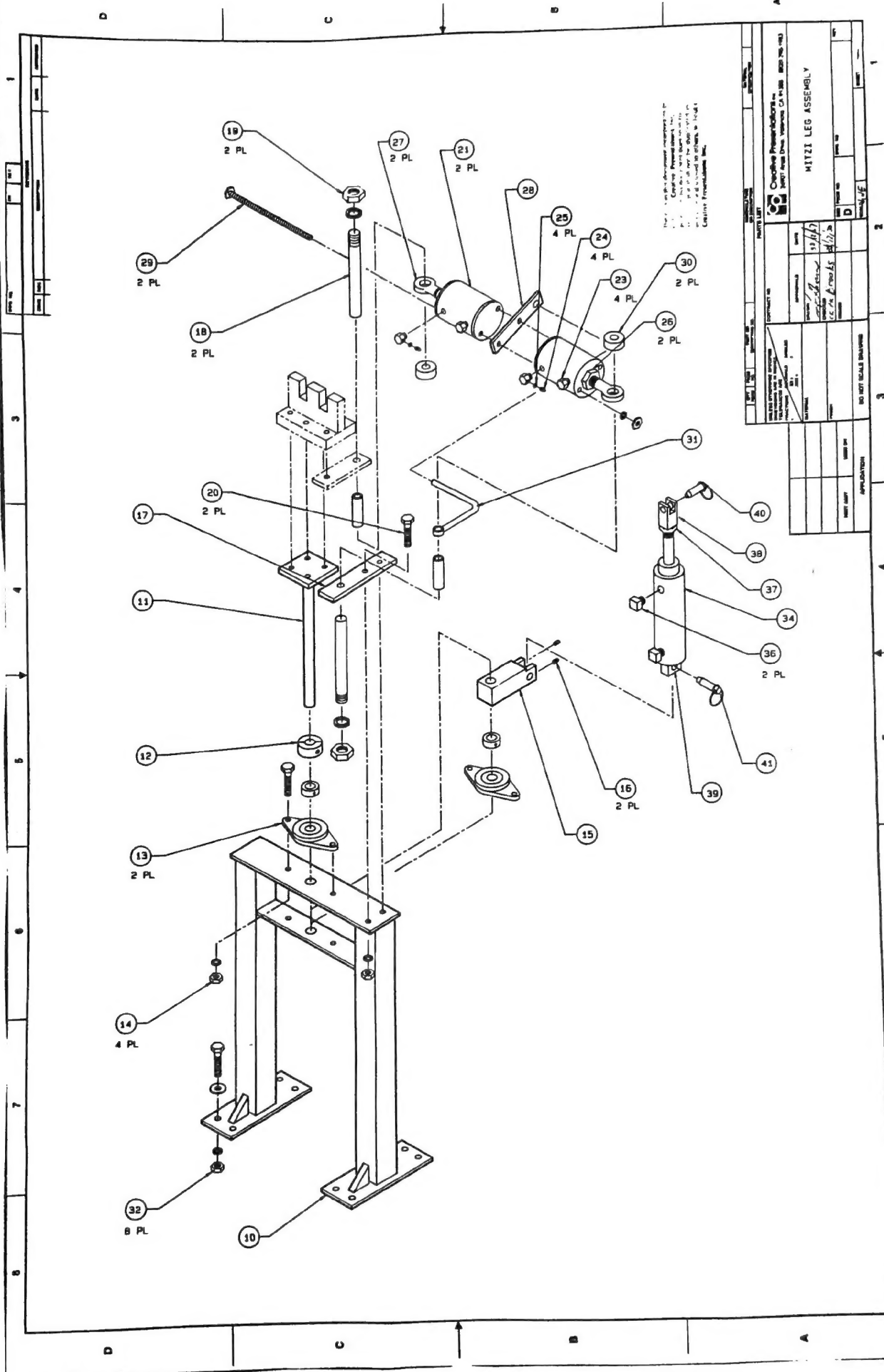
- HARDWARE (attach cylinder to leg and chest) 28-070-029
- 30. Shaft collar
- 31. Alignment rod (body twist cylinder) M07790
- 32. Hardware (attach legs to floor) 28-090-323
 - 3/8-16x1 1/2" bolt
 - 3/8-16 nut
 - 3/8 flatwasher
 - 3/8 lockwasher

BODY LEAN CYLINDER ASSEMBLY

- 33. Rebuild kit (brass cylinder) 28-010-265
- 34. Cylinder only D31802-A
- 35. Rebuild kit (Chicago cylinder) 28-012-050
- 36. Fitting 85-020-031
- 37. Jam nut 28-040-245
- 38. Clevis 28-040-040
- 39. Bushing (cyl. rear) (Chicago only) B810-4

ASSEMBLY HARDWARE

- HARDWARE (attach cylinder to chest and legs)
- 40. FAS-PIN (front mount) 28-055-182
- 41. FAS-PIN (rear mount) 28-055-184



Note: 1. Each adjustment mechanism is for
 2. Caster Preparation Inc.
 3. For use on all casters for the above
 4. Casters are not to be used on other
 5. Casters are not to be used on other
 6. Casters are not to be used on other
 7. Casters are not to be used on other
 8. Casters are not to be used on other
 9. Casters are not to be used on other
 10. Casters are not to be used on other
 11. Casters are not to be used on other
 12. Casters are not to be used on other
 13. Casters are not to be used on other
 14. Casters are not to be used on other
 15. Casters are not to be used on other
 16. Casters are not to be used on other
 17. Casters are not to be used on other
 18. Casters are not to be used on other
 19. Casters are not to be used on other
 20. Casters are not to be used on other
 21. Casters are not to be used on other
 22. Casters are not to be used on other
 23. Casters are not to be used on other
 24. Casters are not to be used on other
 25. Casters are not to be used on other
 26. Casters are not to be used on other
 27. Casters are not to be used on other
 28. Casters are not to be used on other
 29. Casters are not to be used on other
 30. Casters are not to be used on other
 31. Casters are not to be used on other
 32. Casters are not to be used on other
 33. Casters are not to be used on other
 34. Casters are not to be used on other
 35. Casters are not to be used on other
 36. Casters are not to be used on other
 37. Casters are not to be used on other
 38. Casters are not to be used on other
 39. Casters are not to be used on other
 40. Casters are not to be used on other
 41. Casters are not to be used on other

Casters Preparation Inc. 1000 West 10th Street, Vancouver, BC V6H 3G9, Canada Tel: (604) 681-1111 Fax: (604) 681-1112	
Part No. MITZI LEG ASSEMBLY Rev. 1.0 Date: 10/1/97	Drawing No. MITZI LEG ASSEMBLY Rev. 1.0 Date: 10/1/97
Author: J. J. J. J. Date: 10/1/97	Check: J. J. J. J. Date: 10/1/97
Drawn: J. J. J. J. Date: 10/1/97	Approved: J. J. J. J. Date: 10/1/97

Part No. MITZI LEG ASSEMBLY Rev. 1.0 Date: 10/1/97	Drawing No. MITZI LEG ASSEMBLY Rev. 1.0 Date: 10/1/97
Author: J. J. J. J. Date: 10/1/97	Check: J. J. J. J. Date: 10/1/97
Drawn: J. J. J. J. Date: 10/1/97	Approved: J. J. J. J. Date: 10/1/97

MITZI AIR SUPPLY SYSTEM

PLUMBING HARNESS ASSEMBLY

- | | |
|------------------------|------------|
| 10. Hose 1/16" * | 80-005-007 |
| 11. Hose (1/8") .125 * | 80-005-010 |
| 12. Hose .170 purple * | 80-015-015 |

QUICK RELEASE ASSEMBLY

- | | |
|---|------------|
| 13. 24-hole plate
plumbing harness side | M13000 |
| 14. 24-hole plate
valve bank side | M12950 |
| FITTINGS: | |
| 15. Barb 1/16" x 10-32 | 1000 |
| 16. Barb .125 x 10-32 | 1001 |
| 17. Barb .170 x 10-32 | 1503 |
| 18. Gasket (fiber style) | 2400 |
| 19. O-ring (between plates) | 28-045-955 |
| 20. Hardware (attach
quick release
plates together) | 28-090-311 |
| 1/4-20x1 1/2" bolt | |
| 1/4-20 nut | |
| 1/4 flatwasher | |
| 1/4 lockwasher | |

FLOW CONTROL ASSEMBLY

- | | |
|---|------------|
| 21. Flow control valve | FC-32 |
| FITTINGS (barb size depends on
flow control use) | |
| 22. Barb 1/6" x 10-32 | 1000 |
| 23. Barb .125 x 10-32 | 1001 |
| 24. Barb .170 x 10-32 | 1503 |
| 25. Gasket (fiber style) | 2400 |
| HOSE (quick release to valve bank) | |
| 26. Hose 1/16" clippard * | 80-005-007 |
| 27. Hose .125 clippard * | 80-005-010 |
| 28. Hose .170 purple * | 80-015-015 |

VALVE BANK ASSEMBLY

- | | |
|--|------------|
| 29. Valve bank bracket | 28-080-970 |
| 30. Hardware (attach
bracket to valve bank) | 28-090-318 |
| 10-32x2 1/2" bolt | |
| 10-32 nut | |
| #10 flatwasher | |
| #10 lockwasher | |

FITTINGS (barb size depends on valve use)

- | | |
|---|------------|
| 31. Barb .125 x 1/8" MPT | 85-010-012 |
| 32. Barb .170 x 1/8" MPT | 85-010-014 |
| 33. Plug 1/8" socket head | 85-060-010 |
| 34. Hose (valve bank to
exhaust port manifold)
(1/8") .125 clippard* | 80-005-010 |
| 35. Valve bank fitting
3/8" push-lock
x 3/8" MPT | 85-010-044 |
| 36. Hose (valve bank to muf-
fler & intake T-fitting)
3/8" push-lock * | 80-020-029 |
| 37. Exhaust pilot pressure
manifold (12-port) | 85-045-020 |
| FITTING (exhaust pilot
pressure manifold) | |
| 38. Barb .125 x 10-32 | 1001 |
| 39. Plug screw | 85-045-030 |
| 40. Gasket (fiber style) | 2400 |
| 41. Barb 1/4" x 1/8" MPT | 85-010-015 |
| 42. Hose (exhaust pilot
pressure manifold
to muffler)
1/4" push-lock * | 80-020-015 |
| 43. Valve (single valve) | 28-080-110 |
| 44. Lock ring | 28-080-940 |
| 45. Valve repair
Main spool kit | 28-080-920 |
| 46. Seal repair kit | 28-080-910 |
| 47. Gasket (between valves) | 28-080-950 |
| 48. O-ring gasket | 28-080-952 |
| 49. 4" threaded coupler | 28-080-955 |
| 50. End plate set with
cap screws | 28-080-960 |

* Order hose by the foot

MITZI COSTUME & FIBERGLASS

HEAD ASSEMBLY

- | | |
|--------------------|------------|
| 1. Ear (each) * | AE35 8401 |
| 2. Wig | AE33 52007 |
| 3. Mask complete * | AE31 9401 |
| a. Tongue only | AF31 6612 |
| 4. Eyelashes | 21-050-060 |

NECK ASSEMBLY

- | | |
|-----------------------|------------|
| 1. Dickey | AE34 4818 |
| 2. Leather neck guard | AE36 48002 |

CHEST ASSEMBLY

- | | |
|------------------------|-----------|
| 1. Sweater | AE33 2504 |
| 2. Latex breast plate | AE34 4208 |
| 3. Leather (backguard) | AE40 5905 |

SHOULDER ASSEMBLY

- | | |
|-----------------------------------|-----------|
| 1. Leather (right shoulder guard) | AE37 1004 |
| 2. Leather (left shoulder guard) | AE37 504 |

HAND ASSEMBLY

- | | |
|------------------------------|-----------|
| 1. Right hand with pom-pom * | AE32 9202 |
| 2. Left hand with pom-pom * | AE32 9302 |
| 3. Pom-pom only (each) | AE32-5201 |

LEG ASSEMBLY

- | | |
|--------------------|-----------|
| 1. Skirt | AE33 2403 |
| 2. Left fur leg * | AE45 8702 |
| 3. Right fur leg * | AE45 8802 |
| 4. Right shoe | AE34 4619 |
| 5. Left shoe | AE34 4419 |

* IF STORE OPEN PRIOR TO
1/1/82, SPECIFY OLD-STYLE
FUR WHEN ORDERING.

HEAD

- | | |
|--|------------|
| 1. Skull - fiberglass | AE56 019 |
| HARDWARE (attach skull to head frame) | |
| 2. Threaded rod | |
| 1/4-20 x 2 1/8" | 28-057-026 |
| 3. Threaded rod | |
| 1/4-20 x 2 3/8" | 28-057-027 |
| 4. Hardware (att. skull to head frame) | 28-090-329 |
| 1/4-20 nut | |
| 1/4 flatwasher | |
| 1/4 lockwasher | |

PIGTAIL MOUNT

- | | |
|--|------------|
| 5. Pigtail mount | M19390 |
| 6. Hardware (attach pig-tail mount to skull) | 28-090-320 |
| 1/4-20x1" bolt | |
| 1/4-20 nut | |
| 1/4 flatwasher | |
| 1/4 lockwasher | |

BODY

- | | |
|--|------------|
| 7. Body - fiberglass (right side) | AE57 020 |
| 8. Body - fiberglass (left side) | AE58 021 |
| HARDWARE (attach body to chest) | |
| 9. Threaded rod | |
| 5/16-18 x 5" | 28-057-055 |
| 10. Hardware (attach body to chest) | 28-090-330 |
| 5/16-18 nut | |
| 5/16 flatwasher | |
| 5/16 lockwasher | |
| 11. Body mount tabs (body button) | M13340 |
| 12. Hardware (attach body halves together) | 28-090-304 |
| 1/4-20x3/4" bolt | |
| 1/4-20 nut | |
| 1/4 flatwasher | |
| 1/4 lockwasher | |